

OLD STORIES OF THE NEW WORLD

The people that crossed the Atlantic in search
of new beginnings.

STORIES OF MIGRATION

PLACES, PEOPLE AND VOYAGES

COMMEMORATION AND ANNIVERSARY TOURS

FIT AND GROUP TOURS



THE NEW WORLD

OLD STORIES OF

INTRODUCTION TO THE

Discover the stories of migration between England and America – including The Great Migration – when twenty thousand men, women and children crossed the Atlantic in search of new freedoms in the new world.

There's nothing like a quest to stir the soul and fire the imagination. It's the sense of anticipation only a voyage of adventure can bring.

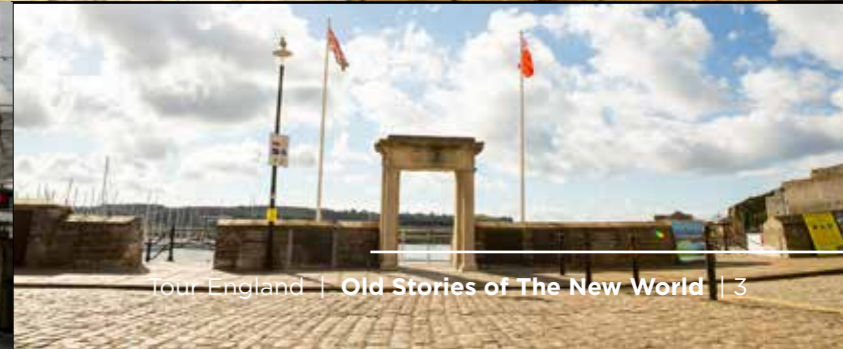
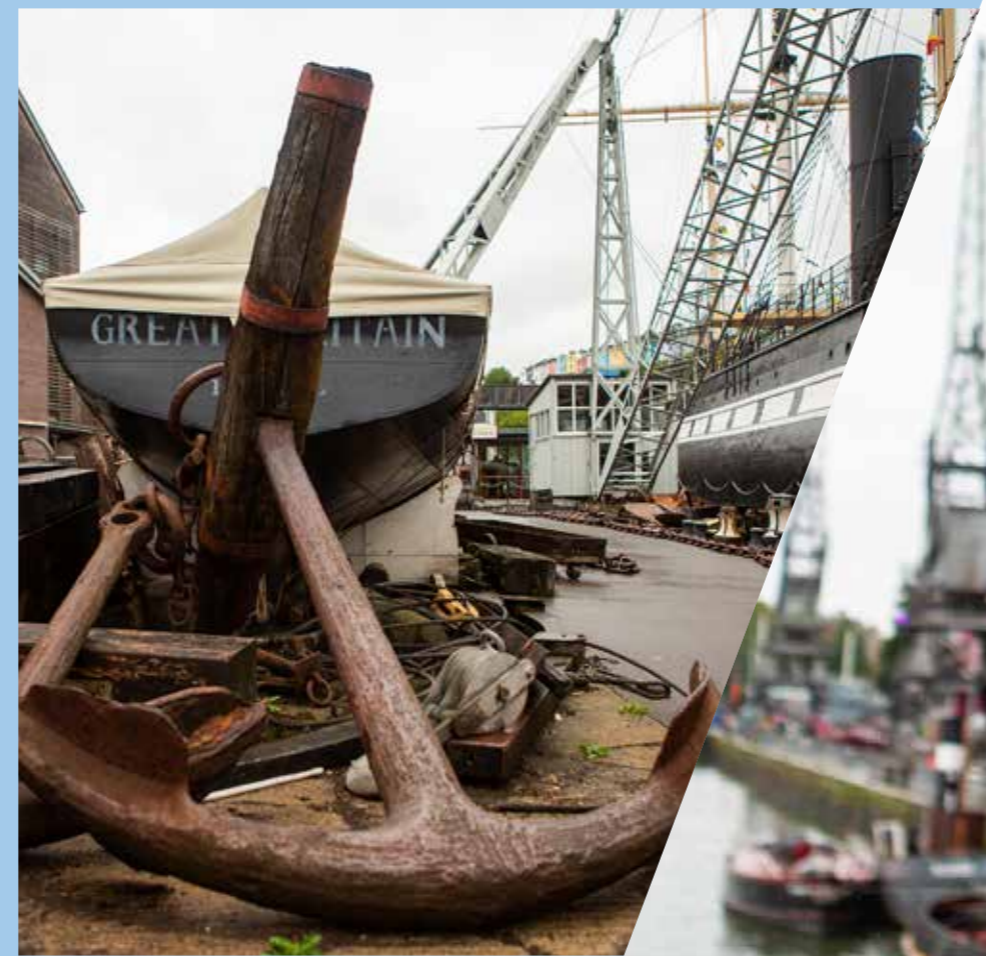
History is rich in tales of human courage. Never more so than the stories of the 'ordinary' individuals who risked all they knew – all they loved – in the hope of founding a new life in a distant land. Whether fleeing religious persecution, starvation or seeking employment and opportunities, their reasons are many and varied. Yet they're united across the ages, by a single thread - hope.

From the struggles of the Jamestown explorers, the plight of Cornish tin miners to the midnight tragedy of SS Titanic or the bright hopes of young GI brides in WWII, few adventures are so rich in love, loss and a legacy that connects us all.

So begins a decade of historic connections. The 'Great Migration Period' - uniting the USA and England. 2019 marks the 400th anniversary of Jamestown; 2020 the 400th anniversary of Mayflower's journey from Plymouth, England; and 2030 - the 400th anniversary of the mass departure from Boston, England - inspired by Rev John Cotton.

Millions of Americans can take this opportunity to explore and experience their ancestral roots. Take a trip back in time: see the same skies, breath the same air; watch the same seas as those intrepid forebears. And, maybe connect with your own kin.

Learn about the English villages, towns and lives your ancestors left behind. Discover your own heritage. Explore the complex history of England and the myriad peoples who shaped this proud island nation, before embarking on adventures that changed our shared history forever.





HAMPSHIRE



GETTING HERE

Rail journeys from London Waterloo station to Southampton take 1 hour 20 mins; and 1 hour 30 mins to Portsmouth. Southampton is 90 miles from London.

For more destination information visit: visit-hampshire.co.uk



Home to Southampton and Portsmouth docks, coastal Hampshire shares a rich seafaring history with America. In 1620 the Mayflower and Speedwell spent two weeks in Southampton, preparing for their voyage to the New World. In the 20th Century the mighty White Star Line operated three weekly services to New York from here - including the ill-fated Titanic whose tragic end would forever connect both cities.

TUDOR HOUSE MUSEUM

This attractive timber-framed, late 15th Century building, is located in the heart of Southampton's old town.

Charting over 800 years of history, the museum incorporates child-friendly activities, technology and interactive exhibits. Fans of historic ships such as Titanic can also learn about Tudor House's maritime history: its proximity to the former waterfront made it the perfect home for a series of shipowners during the 16th Century, as can be seen from the museum's collection of ship-themed engravings.

tudorhouseandgarden.com

THE PILGRIM FATHERS' MEMORIAL, SOUTHAMPTON

Topped with a replica of the Mayflower, the Pilgrim Fathers' Memorial marks their point of departure in 1620. A plaque, inscribed with their story, has been added to with plaques dedicated by pilgrim descendants and family societies.

seesouthampton.co.uk/works/mayflower

SEACITY MUSEUM

Southampton is synonymous with cruise liners. The most famous was undoubtedly Titanic, which left Southampton for New York in 1912.

The SeaCity Museum captures the tragic story of Titanic as never before, chronicling the lives of Southampton's citizens and revealing their own fascinating connections to the doomed ship.

Visitors can gain unique insight into the voyage, rescue and aftermath via a series of multi-sensory exhibits and an intricate, interactive model of the ship.

seacitymuseum.co.uk

FOOD & DRINK

The Grand Café

In the Summer Dining Room, visitors can see a Scott-Moncrieff mural, on canvas, depicting the Pilgrim Fathers preparing to sail for the New World.

grand-cafe.co.uk

PORTSMOUTH HISTORIC DOCKYARD & THE MARY ROSE

This vast dockyard connects no less than 12 museums, with vessels from above and below the water.

Offering the most comprehensive insight into British maritime history, including Nelson's HMS Victory, best known for her role at the Battle of Trafalgar, and Henry VIII's favorite ship the Mary Rose. This boat-shaped museum is built around the remaining hull, (recovered in 1982) which sank in Portsmouth bay (1545).

historicdockyard.co.uk

The Dancing Man

Brewing fabulous beer and serving delicious food

dancingmanbrewery.co.uk

ACCOMMODATION

Room 2, Southampton

The world's first 'hometel' with spectacular harbor views.

room2.com/southampton

Grand Harbour Hotel, Southampton

An iconic landmark on the Southampton waterfront, with 173 luxury rooms and suites, fine dining and spa experience.

grandharbourhotel.co.uk

TOURS AND TOUR GUIDES

See Southampton

Fascinating walking tours led by expert guides. Highlights include the Titanic Trail and an exploration of the Mayflower voyage.

seesouthampton.co.uk

Southampton Tourist Guides

Historic tours with a twist. Of particular note is the 'Mayflower' walk, giving visitors the chance to follow in the footsteps of the Mayflower Pilgrims.

southamptontouristguides.com

Portsmouth Guided Walks & Tours

visitportsmouth.co.uk/things-to-do/guided-walks-and-talks



Portsmouth Historic Dockyard

ANCESTRAL SERVICES

Ancestry and History tours of the New Forest

thenewforest.co.uk

Portsmouth History Centre, Portsmouth Central Library

Family, local and naval history archives.

portsmouth.gov.uk/ext/libraries/portsmouth-history-centre-and-records-office

Hampshire Record Office

Archives and local studies.

hants.gov.uk/archives.htm

Southampton Archives

Southampton archives services hold a rich variety of material relating to the city and its people dating back to 1199.

southampton.gov.uk



SeaCity Museum

PLYMOUTH

GETTING HERE

Plymouth is 238 miles by road from London. Direct trains (operated by GWR) depart hourly from London Paddington, with an average journey time of 4 hours.

For more destination information visit: [visitplymouth.co.uk](https://www.visitplymouth.co.uk)



Britain's 'Ocean City' has served as both the point of departure and arrival for more than a thousand years. From the Mayflower Pilgrims to the GIs of WWII and great ocean liners such as Olympic (sister of Titanic), Mauretania and Queen Mary (today moored in Long Beach, California). Look over the waters of the sound today and experience the same dramatic views.

MAYFLOWER STEPS

On 6th September 1620, the Pilgrims set sail from Plymouth to the New World.

Today, in the historic Barbican area, plaques beside the commemorative Mayflower steps remember this voyage (and others including to New Zealand).

A board outside Island House remembers each name of the Mayflower passengers.

The Mayflower Museum at the visitor center has interactive displays and exhibitions.

[mayflower400uk.org](https://www.mayflower400uk.org)

THE BOX

Opening in 2020, The Box brings Plymouth's rich naval history and ancestral archives to life for modern audiences. Inside, The Box features seven permanent galleries and seven adaptable exhibition spaces. The galleries will offer exhibitions like '100 Journeys that Shaped the World', reinterpreting historic stories such as the Mayflower's Pilgrim Fathers and Charles Darwin's HMS Beagle. In addition, six permanent archives will be available to visitors eager to uncover Plymouth's past through local history, books, images, films, maps and publications.

[plymhearts.org/thebox](https://www.plymhearts.org/thebox)

BUCKLAND ABBEY

700 years of footsteps; from the Cistercians who built the Abbey and farmed the estate, to seafarers Grenville and Drake who changed the shape of the house and the fate of the country. The Abbey is part museum, part house, and filled with treasures such as the legendary Drake's Drum.

[nationaltrust.org.uk/buckland-abbey](https://www.nationaltrust.org.uk/buckland-abbey)

PLYMOUTH BOAT TRIPS (PLYMOUTH SOUND)

Take to the water and see Plymouth and the surrounding South West coast as the Pilgrims did. Plymouth Boat Trips set sail from the Barbican waterfront, offering one-hour trips along the city's historic river Tamar, and half-day trips to the pretty village of Calstock on the river Yealm - or across the Cornish border to Cotehele (a Tudor house run by the National Trust) Private group tours with Mayflower commentary available by request.

[plymouthboattrips.co.uk](https://www.plymouthboattrips.co.uk)

ELIZABETHAN HOUSE & GARDENS

Behind the Plymouth Barbican - between the old and new city - you can experience home life through the eyes of an Elizabethan merchant. Wander landscaped gardens rich in colourful flora and neat hedges. Rest beside the central fountain and breathe in the refreshing sea air. Opening 2020.

[visitplymouth.co.uk](https://www.visitplymouth.co.uk)

ACCOMMODATION

Buckland Abbey

Self-catering accommodation is available in the grounds of Buckland Abbey. Ideal for FITs, family groups and couples who want the experience of staying in the grounds of an English estate.

[nationaltrust.org.uk/buckland-abbey](https://www.nationaltrust.org.uk/buckland-abbey)

TOURS AND TOUR GUIDES

Plymouth Boat Trips

See Plymouth and the surrounding South West coast as the Pilgrims did.

[plymouthboattrips.co.uk](https://www.plymouthboattrips.co.uk)

Select South West Tours

Multi-day driving tours of South West England.

[selectsouthwesttours.com](https://www.selectsouthwesttours.com)

Unique Devon Tours

Tours and holidays for FITs and small groups.

[uniquedevontours.com](https://www.uniquedevontours.com)

America Loves Cornwall Tours

Mayflower 400 commemoration tours available for small groups, visiting Plymouth and Cornwall. Customized day and touring packages available.

[americalovescornwall.com](https://www.americalovescornwall.com)

Blue Badge Guides

Walking tours of the city and key historic sites with official Blue Badge Guides.

[britainsbestguides.org/guides/jane-dymock](https://www.britainsbestguides.org/guides/jane-dymock)

PLYMOUTH GIN DISTILLERY

The oldest Gin Distillery in the UK, believed to be the place where the Mayflower Pilgrims spent their last night. Distillery tours available. Barbican Kitchen for dining.

[plymouthdistillery.com](https://www.plymouthdistillery.com)

THE MINSTER CHURCH OF ST ANDREW

The bells of St Andrew's Church still celebrate Sir Francis Drake's 16th Century voyage around the world. Discover the family names of Plymouth's merchants - from the time of The Mayflower - inscribed on the stone floor.

[standrewschurch.org.uk](https://www.standrewschurch.org.uk)

FOOD & DRINK

Barbican Kitchen

Fresh local foods, in the world famous Plymouth Gin Distillery.

[barbicankitchen.com](https://www.barbicankitchen.com)

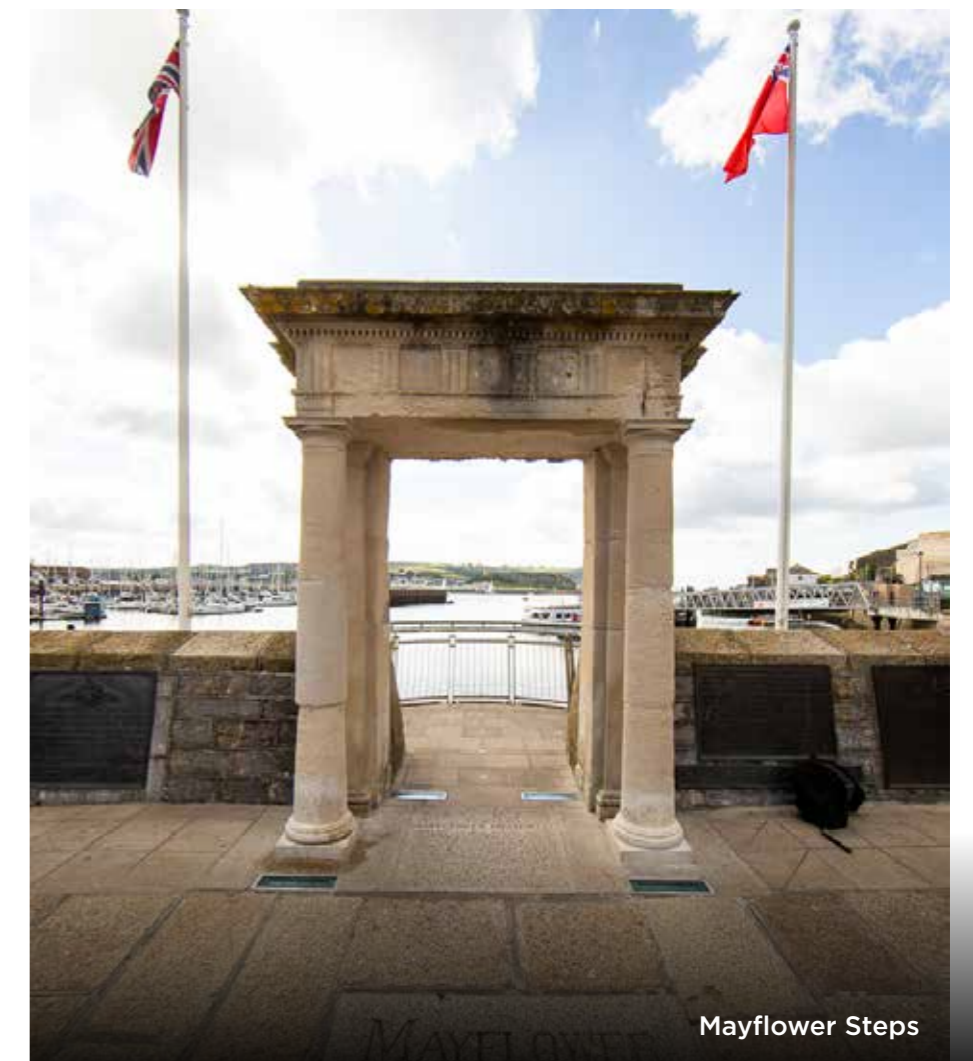
Rockfish

Fresh, sustainable fish and shellfish, in a New England -style beach shack setting.

[therockfish.co.uk](https://www.therockfish.co.uk)



Elizabethan Gardens



Mayflower Steps

CORNWALL



GETTING HERE

The mainline train from London Paddington to Penzance takes 6 hours. 280 miles by road, it takes 5½ hours to reach Penzance from London by car. You can also fly into Newquay airport.

For more destination information visit: visitcornwall.com



The stunning coastal county of Cornwall is one of England's finest destinations. Popular for its breathtaking coastline and picture-perfect fishing villages and towns, much of today's landscape was shaped by its pioneering mining industry. In the 19th Century many emigrants left for the mining regions of North America. Today, Cornwall's UNESCO World Heritage Site preserves this unique heritage for future generations. There are many mining sites to enjoy - you may recognize some from the blockbuster BBC TV series Poldark!

CORNISH MINING WORLD HERITAGE SITE

During the 19th and 20th Centuries an estimated 250,000 people left Cornwall for America - carrying their mining expertise and the English culture with them. Ten unique locations, representing Cornish mining, make up the UK's largest 'World Heritage Site'. There are over 20,00 hectares to explore, including 200 iconic Cornish engine houses - and a myriad of human stories to discover.

whc.unesco.org/en/list/1215



Poldark Mine

TRENGWAINTON GARDEN

A country garden owned by the National Trust, close to Penzance, former residence of Cornwall's Arundell family.

nationaltrust.org.uk/www
nationaltrust.org.uk/trengwainton-garden

POLDARK MINE

A Cornish Mining World Heritage site and the only tin mine to offer underground guided tours. The heart of tin mining, heavily featured in the BBC drama - Poldark.

poldarkmine.org.uk

KING EDWARD MINE

Another World Heritage site, offering daily demonstrations of historic mining equipment - among the last in the world.

kingedwardmine.co.uk

ACCOMMODATION

Pentillie Castle and Estate

Explore 300 years of family history, in this spectacular location beside the Tamar River.

pentillie.co.uk

The Cornwall Hotel Spa

Relax and unwind in this 2017 Sunday Times 'Best Places to Stay' estate.

thecornwall.com



Penzance. Credit: Matt Jessop

ANCESTRAL SERVICES

Cornwall Family History Society

For members and the general public researching Cornish family history.

cornwallfhs.com

Kresen Kernow

Kresen Kernow is a modern archive and library space, bringing together the world's largest collection of manuscripts, books and documents related to Cornwall.

cornwall.gov.uk

NEWLYN, CORNWALL

Traditional fishing port where the Mayflower stopped for water supplies.

mayflower400uk.org/visit/plymouth-england/attractions/newlyn-cornwall

BOTTALACK & BOTTALACK MINE

The famous Crowns engine houses of Botallack Mine cling dramatically to the foot of the hills in this village - one of Cornwall's most iconic places and a location in the BBCs Poldark.

nationaltrust.org.uk/botallack

ROYAL CORNWALL MUSEUM

A beacon for Cornish Heritage and culture with collections rooted in Cornwall's mining heritage and rare books and manuscripts.

royalcornwallmuseum.org.uk

TOURS AND TOUR GUIDES

Poldark's Cornwall

Experience Poldark's Cornwall and much more with fully packaged and customized tours of the county. Mayflower and other cultural tours available.

Poldarktours.co.uk
AmericaLovesCornwall.com

Select South West Tours

Multi-day driving tours of South West England.

selectsouthwesttours.com

Unique Cornwall Tours

Tours and holidays for FITs and small groups.

uniquecornwalltours.com



Newlyn

GETTING HERE

The main High Speed One train from London St Pancras International station reaches Kent in less than 30 minutes. Dover is 80 miles by road, Canterbury 66 miles.

For more destination information visit: visitkent.co.uk



The county of Kent boasts the iconic White Cliffs of Dover – the cliffs would leave a lasting memory in the minds of those who set sail from England’s south coast – and were the first sign of arrival for ships coming into England. Robert Cushman, a key puritan came from Kent and was married in Canterbury – Cushman negotiated the financing and hiring of the Mayflower and later traveled to America on the Fortune. Adventure Julius Brenchley, known as ‘Maidstone’s New World Explorer’ traveled from Maidstone in Kent to explore the largely uncharted regions of the USA.

CANTERBURY CATHEDRAL

Mother Church to the worldwide Anglican Communion, Canterbury has witnessed Christian pilgrimage and migration for over 1,400 years. Founded by St Augustine (597 AD) the Cathedral is often described as ‘England in stone’.

In 1170 AD “troublesome priest” Thomas Becket was martyred here – a candle marks the spot. During the thirteenth century Archbishop Langton played a crucial role in the negotiation of Magna Carta. The Cathedral was also the destination for Chaucer’s imaginary Pilgrim’s Progress. Canterbury has an historic link with America’s earliest Pilgrims. Local man Robert Cushman (born in Rolvenden) was apprenticed in the city and married at the Cathedral. A devout Puritan, he negotiated the hiring of the Mayflower before undertaking his own pilgrimage, aboard the Fortune in 1621.

canterbury-cathedral.org

IGHTHAM MOTE

In 1953, American businessman Charles Henry Robinson Jr, purchased this captivating medieval house - home to an eclectic mix of people across the centuries, from builders to royal courtiers.

Of particular note is the memorial plaque in the Mote’s crypt bearing the inscription ‘A Pilgrim Returned’. Robinson’s grandmother, Emily Cobb, was a descendant of those who sailed on the Mayflower.

nationaltrust.org.uk/ightham-mote

ST GEORGE’S CHURCH, GRAVESEND & THE POCAHONTAS MEMORIAL

Pocahontas, wife of John Rolfe - one of the early English settlers in North America - was laid to rest in the chancel of St George’s. Her statue can be seen in the churchyard and visitors can admire the beautiful memorial glass windows a present from the Colonial Dames of Virginia.

stgeorgesgravesend.org

MAIDSTONE MUSEUM

A free museum offering exhibitions, talks, and family-friendly activities. Not to be missed is the collection donated by gentleman adventurer Julius Brenchley – ‘Maidstone’s New World Explorer’ - who travelled from his British hometown to explore the United States in the 19th Century.

museum.maidstone.gov.uk

WHITE CLIFFS OF DOVER

England’s most iconic natural landmark has served as a barrier, a sign of welcome and fond farewell for travelers across the centuries.

nationaltrust.org.uk/the-white-cliffs-of-dover

ACCOMMODATION

ABode Canterbury

A 12th Century building; luxury city center hotel.

abodecanterbury.co.uk

Hotel du Vin

Elegant accommodation and exceptional dining - from the heart of ‘the garden of England’.

hotelduvin.com/locations/tunbridge-wells

TOURS AND TOUR GUIDES

Local Kent Volunteer Greeters

Explore Kent with a local expert on a free walking tour. Booking essential.

visitkent.co.uk/stay-and-eat/getting-here/kent-greeters

Canterbury Historic River Tours

Discover this historic city by boat.

canterburyrivertours.co.uk

South East Guides

Directory of professional Green and Blue Badge guides in Kent.

southeastbestguides.org

ANCESTRAL SERVICES

Kent County Council History and Archives Center

Extensive collections of maps, records, stories and histories of the people of Kent.

kent.gov.uk/leisure-and-community/history-and-heritage/kent-archives

Canterbury Cathedral Archives

Rich collection of manuscripts, maps, historic records and books dating from the 8th Century.

canterbury-cathedral.org

Medway Archives Center

Perfect for researching your family story, and history, geography and people of Medway.

cityark.medway.gov.uk



Ightham Mote



White Cliffs of Dover



GETTING HERE

The mainline train from London Liverpool Street to Chelmsford takes just 30 minutes. Colchester takes just over an hour. London is 40 miles by road from Chelmsford.

For more destination information visit: visitessex.com



East of London, the coastal county of Essex has a long history of religious radicals, explorers and adventurers, many with strong links to North America. In 1606, Christopher Newport (from Harwich) led the *Godspeed*, *Discovery* and *Susan Constant* on the pioneering settlement of Jamestown. Christopher Jones (Master of the *Mayflower*), Thomas Hooker, (founder of Connecticut) and John Winthrop, (governor of Massachusetts) all came from here.

VISIT HARWICH

In 1606, local man Christopher Newport helped found the first permanent English settlement in Virginia, naming 'Jamestown' in honor of King James I. . By the time the *Mayflower* sailed for America in 1620, Harwich was established as a town from where ships and sailors could be recruited for trans-Atlantic expeditions. Christopher Jones, the Master of the *Mayflower* was also from Harwich. Many of these migration stories can be seen in the town and local tour guides will bring the sites to life.

visitessex.com/harwich.aspx

HARWICH MAYFLOWER CENTER

2020 marks 400 years since the *Mayflower* completed its famous voyage to Plymouth, Massachusetts – and Harwich has every reason to celebrate. This new visitor attraction tells the story of local captain Christopher Jones and his merchant vessel. Charting the strong maritime heritage of this port town, the center is the ideal place to learn about the roots and culture of America's earliest English settlers.

visitessex.com/harwich.aspx

CHURCH OF ST MARY & ALL SAINTS, GREAT STAMBRIDGE

John Winthrop a Puritan and the First Governor of Massachusetts married in the church at Great Stambridge. There is a window commemorating John in the church – paid for by the Winthrop Society.

winthropsociety.com

BRAINTREE

John Adams and his son John Quincy Adams, whose ancestors sailed to America in 1632 aboard "The Lyon", both became US presidents. A replica of 'The Lyon' that sailed to America in 1632 can be found at Braintree Museum.

visitessex.com/braintree.aspx

DEDHAM VILLAGE

Set beside the River Stour, the village proved fertile recruiting ground for the American colonies. A dozen descendants of Henry Sherman emigrated to New England from 1633 to 1640. Their family tree includes a co-founder of Rhode Island, a signatory of the Declaration of Independence, a Vice-President and many more US luminaries.

visitcolchester.co

CHELMSFORD CATHEDRAL

A fusion of 15th, 19th and 20th Century design, the cathedral's stained glass window marks Anglo-American friendship. A plaque honors Thomas Hooker – who preached here, before emigrating in 1633 to found the state of Connecticut.

chelmsfordcathedral.org.uk



Dedham Village

ACCOMMODATION

The Alma Harwich

Traditional English pub with history - serving local food. Rooms available.

almaharwich.co.uk

The Pier, Harwich

Luxury boutique English seaside hotel, bar and restaurant.

milsomhotels.com/the-pier

Maison Talbooth, Dedham

Relaxing top 100 Hoteliers' luxury country house - with outdoor pool.

milsomhotels.com/maison-talbooth



Harwich Harbour
Credit @FionnDavenport

ST MARY MAGDELENE CHURCH, BILLERICAY

Among the 102 passengers who boarded the *Mayflower* in 1620 were Christopher Martin and family. The ship's governor also served as church warden at St Mary Magdelene's church. Billerica Massachusetts, established in 1655, is now twinned with Billericay.

greatburstead-church.co.uk

FOOD & DRINK

Dedham Boathouse

Enjoy the English countryside just like the locals, hire a rowing boat and enjoy an ice cream or a la carte menu.

dedhamboathouse.com

Tiptree tea room & factory

This charming English tea room stocks world-famous Wiklin & Sons jam. Savour a classic afternoon tea and learn more about its history.

tiptree.com

DID YOU KNOW?

During the 1600s, Archbishop Laud was so unpopular that thousands of people from Essex migrated to America. Today, the place names of old Essex - Chelmsford MA, Colchester CT, Epping NH - are found throughout New England.

TOURS AND TOUR GUIDES

The Harwich Society

An organisation that preserves the town's rich heritage, and runs fascinating free guided tours.

harwich-society.co.uk

ANCESTRAL SERVICES

Essex Records Office, Chelmsford

Tracing your English Ancestors can begin at home, through their remote search option for US residents.

essexrecordoffice.co.uk



Chelmsford Cathedral





LINCOLNSHIRE



GETTING HERE

Two hours by rail from London King's Cross station direct to Lincoln or 1 hour and 10 minutes via Newark Northgate. London is just 140 miles away from Lincoln by road.



For more destination information visit: VisitLincolnshire.com and visitlincoln.com

Lincolnshire, on the East Coast of England is home to the 'original' Boston. It was here at St Botolph's Church that Rev. John Cotton inspired the mass migration of 1630's. Boston and nearby Gainsborough also played a key part in the early story of the Mayflower Pilgrims. Prior to the Mayflower voyage, John Smith – from Willoughby, Lincolnshire sailed to Jamestown –and was rescued from imprisonment by his future wife Pocahontas.

LINCOLN CATHEDRAL

This impressive Gothic cathedral has 140 stained-glass windows, including a section dedicated to Lincolnshire explorers including John Smith. Born in Lincolnshire, Smith was a soldier and early leader of the Jamestown colony. The love story he shared with Pocahontas endures to this day. The library contains many books from the period, including Blaeu's Atlas of 1647, with a picture of Smith, smoking a pipe with his future father-in-law, Native American Chief Powhatan.

lincolncathedral.com

LINCOLN CASTLE

This turreted fortress was built over 900 years ago, by William the Conqueror.

A highlight of any visit is the stately vault containing an original 1215 copy of the Magna Carta (alongside a widescreen cinema telling its story). A foundation stone of ancient civil liberty and justice, this document influenced several amendments to the US Constitution - and was itself stored in Fort Knox during World War II.

lincolncastle.com

BOSTON GUILDHALL

Now a museum with exhibits stretching back to the Middle Ages, it's also where the Mayflower Pilgrims were held and tried after their first attempt to flee to Holland. Stand in the very courtroom in which they were tried. Then squeeze into the cramped cells as the door swings shut behind you.

bostonguildhall.co.uk

ST BOTOLPH'S CHURCH

Known as 'the Boston Stump' after its 272 foot tower, the church is over 700 years old. Puritan John Cotton served as minister here, between 1612 to 1633, before sailing to Massachusetts. 200-300 members of Boston's community followed - including a lord mayor, lawyer and schoolmaster. The Cotton Chapel was restored and renamed in 1857 using funds from the USA.

parish-of-boston.org.uk

ALFORD VILLAGE

Birthplace of preacher Anne Hutchinson.

alford.info

GAINSBOROUGH OLD HALL

One of the finest preserved timber buildings in England, this 15th Century manor house has impressive 17th Century wall paintings. It was here that renegade preacher John Smyth would assemble his congregation and influence the Separatist movement.

gainsborougholdhall.com

IMMINGHAM

The memorial in Pilgrim park honors the moment the Pilgrims first left England in 1609. It is carved from Massachusetts granite.

imminghammuseum.org

ST HELENA'S CHURCH

John Smith's baptism happened here in Willoughby.

sthelensbrantbroughton.org.uk

ACCOMMODATION

White Hart Hotel, Lincoln

Exceptionally stylish hotel at the heart of historic Lincoln.

whitehart-lincoln.co.uk

DoubleTree By Hilton Hotel, Lincoln

Waterfront hotel, modern, stylish; suitable for groups and FITs.

doubletree3.hilton.com/Lincoln



Gainsborough Old Hall



Boston Stump Tower



Lincoln Castle

TOURS AND TOUR GUIDES

Pilgrims & Prophets

Specialist and customized guided tours with Christian Heritage experts across Lincolnshire and Nottinghamshire.

pilgrimsandprophets.co.uk

Blue & Green Badge Tourist Guides

Blue and Green Badge walking and on-coach tours of Lincoln and Lincolnshire. Booking essential.

visitlincoln.com/things-to-do/guided-tours

Hidden Lincoln

Customized walking tours of historic Lincoln with local specialists.

hiddenlincoln.com

CAMBRIDGE



GETTING HERE

Cambridge is a 50-minute train journey from London King's Cross. Cambridge is 64 miles north of London along the M11 – a journey which can take up to 90 minutes by road.

For more destination information visit: VisitCambridge.org



Cambridge is one of England's best loved historic cities. Home of the world-famous University, the city has many connections to the US, its citizens and institutions. Global icons and religious scholars have lived and studied here - Erasmus and Bucer, and Sir Walter Mildmay - the Puritan founder of Emmanuel College, with its surprising link to Harvard University.

EMMANUEL COLLEGE

Established in 1584, Emmanuel College Cambridge has many renowned alumni. Its most famous graduate is John Harvard - clergyman and co-founder of Harvard University.

Of the first 100 graduates to migrate to the new settlement in Massachusetts Bay, one third came from Emmanuel College. This included Thomas Sheppard, one of the best known preachers of the 17th Century who helped establish Cambridge, Massachusetts.

emma.cam.ac.uk



Emmanuel College



Cambridge

ACCOMMODATION

University Arms Hotel

The newly refurbished University Arms is a touch of class in the city center. Elegant art deco rooms, stunning city views.

universityarms.com

The Varsity Hotel & Spa

City center location, close to the colleges. Rooftop terrace and bar, spa and dining options.

thevarsityhotel.co.uk



Cambridge



Tours of Cambridge

LITTLE ST MARY'S

Reverend Godfrey Washington (Great Uncle of first US President George Washington) is buried in Little St Mary's. The Washington Family coat of arms adorns the church tablet.

ism.org.uk

TOURS AND TOUR GUIDES

Official Tours of Cambridge

Take a walking tour of the city with an official Blue badge guide. Enjoy exclusive access to the awe-inspiring chapel and grounds of King's College with the two-hour King's College & The Backs Tour. Gain a glimpse of student life with the 90-minute Highlights tour - featuring Pembroke College and the Cambridge University Library Tour. All tours include the stories of famous Cambridge students including Sir Isaac Newton, Charles Darwin and Stephen Hawking.

visitcambridge.org/official-tours

GETTING HERE

Regular direct rail services from London St Pancras to Newark, Nottingham and Retford take from 1½ to 2 hours. By road Nottingham is 130 miles from London.

For more destination information visit: Visit-Nottinghamshire.co.uk



Home to legendary outlaw Robin Hood, rebellious spirits, rich history and sporting glory, Nottinghamshire was home to many of the Puritans who sailed on the Mayflower. The county was central to the movement that triggered the 'Great Migration' period - carrying thousands from England to the distant shores of America.

BABWORTH AND SCROOBY CHURCHES

In the 16th Century, pastor Richard Clyfton preached Separatist services at All Saints Church (Babworth). His congregation included Mayflower passengers William Bradford and William Brewster.

In nearby Scrooby you'll find the wooden pews where Brewster and his family once worshiped.

pilgrimroots.org



TOURS AND TOUR GUIDES

The Mayflower trail (self-guided)

Travel through peaceful villages and uncover the many historic sites associated with the principal figures from the Mayflower Pilgrim's story.

visit-nottinghamshire.co.uk/ideas-and-inspiration/mayflower-pilgrims/the-mayflower-train

Pilgrims & Prophets

Specialist and customized guided tours with Christian Heritage experts across Lincolnshire and Nottinghamshire.

pilgrimsandprophets.co.uk

Mayflower Maid

Take a costume-guided tour of the Pilgrim villages and churches with historian Sue Allan.

mayflowermaid.com

ACCOMMODATION

Ye Olde Bell Hotel & Spa

Close to Retford, in the heart of North Nottinghamshire, ideally situated for groups and FITs visiting the Pilgrim region.

yeoldebells-hotel.co.uk

DID YOU KNOW?

Nottinghamshire and Worcestershire have historical connections with the Mayflower Pilgrims and will commemorate the 400th anniversary in 2020.

Mayflower400UK.org



Scrooby Church

GETTING HERE

Rail services from London Paddington to Worcester take 2 1/2 hours. Accessible by air, Worcester is 140 miles from London by road.

For more destination information visit: VisitWorcestershire.org



Home of the first and final battle in the English Civil War (1642-51) the county sparked the curiosity of Thomas Jefferson, who visited Fort Royal Hill, the site where English democracy was born. Nearby Droitwich Spa is the birthplace of Mayflower Pilgrim Edward Winslow - who sailed on the Mayflower and became governor of Plymouth, Mass., three times.

WORCESTER CATHEDRAL

A place of worship for 14 centuries, Worcester Cathedral offers sweeping views over the city and is the final resting place of St Wulfstan, King John and Prince Arthur. Composer Sir Edward Elgar conducted his works here. Mayflower Pilgrim Edward Wilmslow attended the King's School; and Scottish troops (who fought for King Charles I) were imprisoned here after the final battle in the English Civil War, before being deported to America.

worcestercathedral.co.uk

THE HIVE

This modern five-storey venue combines public and university libraries, and the Worcester Archive and Archaeological Service. Explore your ancestry through church, council, hospital and private family records - some dating to the 12th Century. Staff will guide you through the extensive resources, narrow your search across print, microfilm and Internet - or conduct research on your behalf.

thehive Worcester.org

DROITWICH SPA HERITAGE CENTRE & ST PETER'S

Offering useful local information, you can also browse exhibits on the town's long history of salt production - and its famous radio transmitting station - which broadcast as far as continental Italy.

visitdroitwichspa.com/droitwich/tourist-information-heritage-centre

ACCOMMODATION

Malvern Bank Hotel & Spa

An oasis of relaxation and indulgence, beside the rolling Malvern hills.

bankhouse Worcester.com/malvern-view-spa

Diglis House Hotel

Super location in Worcester city center, beside the River Severn. FITs and small groups.

diglishousehotel.co.uk



Worcester Cathedral

TOURS AND TOUR GUIDES

Discover History

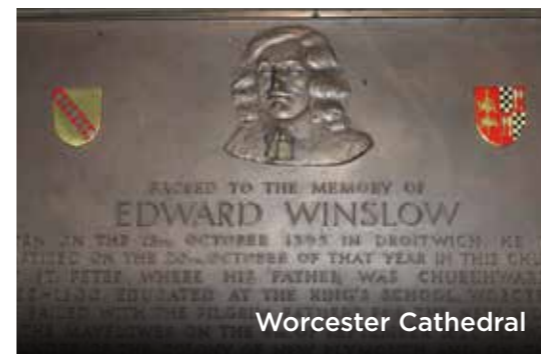
Costumed and themed guided tours. Ideal for educational and groups.

discover-history.co.uk

Worcester City Walks

Guided walking tours of the city center.

worcester.gov.uk



Worcester Cathedral

BRISTOL



GETTING HERE

Direct rail services from London Paddington to Bristol take 1¼ hours. By road Bristol is 130 miles from London. Bristol Airport provides connections to US flights via Dublin.

For more destination information visit: VisitBristol.co.uk



The vibrant port-city of Bristol is awash with stories of American migration. Over 500 years ago, John Cabot boarded The Matthew bound for Newfoundland. In 1619, Berkeley Company ship The Margaret left for the shores of America landing at Jamestown, triggering the first thanksgiving - these stories and more await you in Bristol.

THE MATTHEW

The Matthew is a modern reconstruction of the ship that carried John Cabot and his crew across the ocean to Newfoundland in 1497. Climb aboard for free and learn the secrets of Cabot's epic voyage. Scheduled and Charter tours are available.

matthew.co.uk/the-matthew

CABOT TOWER

The original tower built to commemorate John Cabot's discovery of North America (a second exists in St John's, Newfoundland and Labrador), this impressive structure offers breathtaking panoramic views of Bristol and its harbor.

bristol.gov.uk/museums-parks-sports-culture/brandon-hill

LORD MAYOR'S CHAPEL, COLLEGE GREEN

This unique chapel is the only remaining building from the 13th Century hospital of Saint Mark. It's also home to a special coat of arms: those of Richard Amerike, sponsor of John Cabot's voyage to North America

lordmayorschapel.org

BRUNEL'S SS GREAT BRITAIN

Take a thrilling trip into the 19th Century with the magnificently restored SS Great Britain, which currently resides within Bristol Harbour.

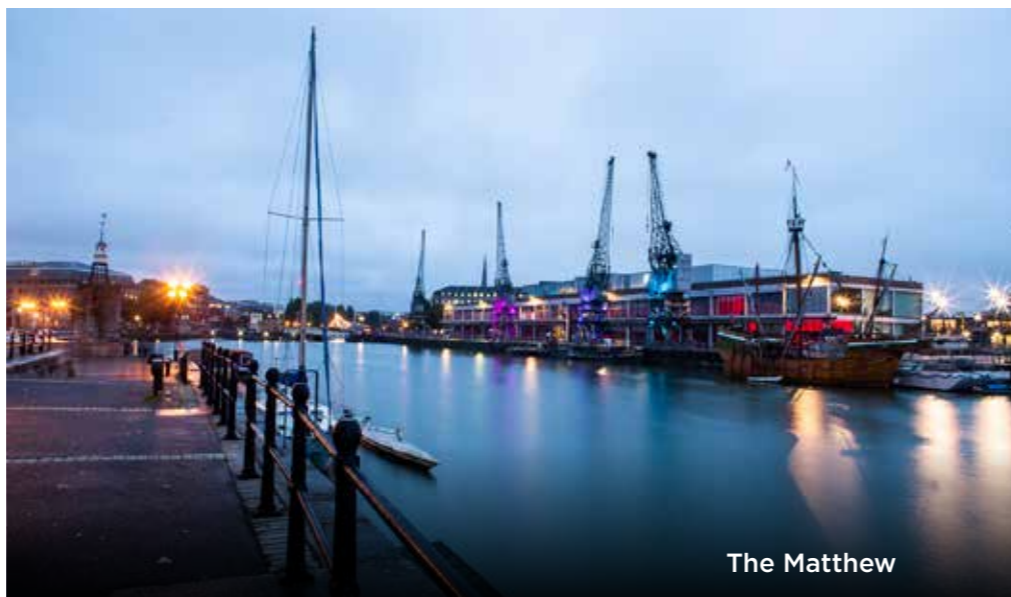
The masterpiece of famous British engineer Isambard Kingdom Brunel, this extraordinary ship was the first iron steamer in the world. Climb aboard and experience a true taste of Victorian life: see how passengers in steerage would have slept; how those in first class would have dined; and, if you're feeling brave, climb the rigging. Ahoy!

ssgreatbritain.org

BERKELEY CASTLE

Built in the 11th Century, this stunning red-stone castle has been home to the aristocratic Berkeley family for nearly 900 years. Berkeley Castle has a captivating history, which visitors are encouraged to experience through a complimentary guided tour. The Berkeley family has always had strong ties with the US: in fact, the first ever Thanksgiving was held in Virginia in 1619 to give thanks for the safe arrival of The Margaret - the Berkeley Company ship. Tours of the castle with Charles Berkeley can be pre-booked.

berkeley-castle.com



The Matthew

ACCOMMODATION

Thornbury Castle

Sleep like a king. Once owned by Henry VIII, this magnificent Tudor castle is now a luxury hotel.

thornburycastle.co.uk

Bristol Harbour Hotel

The ultimate urban escape: luxurious accommodation, modern design and relaxing spa - in the heart of Bristol.

harbourhotels.co.uk/hotels/bristol



Berkeley Castle

TOURS AND TOUR GUIDES

Treasure Island Trail

Costumed and themed guided tours. Ideal for educational and group experiences.

longjohnsilvertrust.co.uk

Clifton Suspension Bridge Tours

One of the world's great bridges spanning the picturesque Avon Gorge, known as Brunel's 'first love'.

cliftonbridge.org.uk

ANCESTRAL SERVICES

Bristol Records Office

familytreeresources.co.uk/bristol-record-office.html

Brunel Institute at Brunel's SS Great Britain

ssgreatbritain.org/brunel-institute



Brunel's SS Great Britain

GLOUCESTER



GETTING HERE

Direct rail services from London Paddington to Gloucester take 2¼ hours. By road Gloucester is 100 miles from London.

For more destination information visit: thecityofgloucester.co.uk



Few counties enjoy such a wealth of connections with New England and modern day America. 9.54 million US citizens trace their roots to the county. Famous natives include Button Gwinnett, whose signature appears on the US Declaration of Independence and Methodist leader Rev. George Whitefield. Gloucester, Massachusetts was named in recognition of the English city's famously defiant nature.

ST MARY DE CRYPT

Rev. George Whitefield first preached here and taught in the adjoining room. In 1740, he traveled to North America, where his revivals came to be known as the "Great Awakening". Probably the most famous religious figure of the eighteenth Century, newspapers called him the 'marvel of the age'. Whitefield commanded thousands - on two continents - with the power of his oratory. In his lifetime, he preached at least 18,000 times to perhaps 10 million people, capturing audiences through a potent combination of drama and religious rhetoric. He preached almost constantly, traveling throughout the colonies, especially New England.

discoverdecrypt.org.uk

GLOUCESTER CATHEDRAL

Button Gwinnett was a British-born American patriot who, as a representative of Georgia to the Continental Congress, became the second person to sign the United States Declaration of Independence. He was also, briefly, the provisional president of Georgia (1777) before dying in the Revolutionary War. Born in Down Hatherley, just outside Gloucester, he was schooled at St Mary de Crypt and was a chorister at Gloucester Cathedral.

gloucestercathedral.org.uk

DID YOU KNOW?

Gwinnett's autograph is highly prized by collectors keen to own all 56 names on the U.S. Declaration of Independence. Gwinnett died during the war and only 51 examples of his signature are known - ten in private hands.



Gloucester Cathedral

ACCOMMODATION

Hatton Court Hotel

Independent boutique hotel bordering the Cotswold way. 4 miles from the city.

hatton-court.co.uk

Mercure Bowden Hall

Four-star country house hotel with Panoramic views of the Cotswolds.

Mercuregloucester.co.uk

ANCESTRAL SERVICES

Hidden Heritage

Gloucestershire's Genealogy service (based at Gloucestershire Archives) is run by Liz Jack, a direct descendent of Button Gwinnett.

hidden-heritage.co.uk/services/



Gloucester Cathedral

TOURS AND TOUR GUIDES

Civic Trust Guided Tours

Specialist walking tours of Gloucester with expert guides. Pre-booking required.

gloucestercivictrust.org



Gloucester Docks



Gloucester City.
Credit @Fionn Davenport



TRAVEL INFORMATION

Getting here and getting around.

The product in this document can be built as a touring itinerary, or it can be used as modular content and incorporated into existing England tours.

Many of the destinations and things to do can be accessed in a day from London - but we recommend you linger for longer in these regions outside of London - and uncover the real England.

By Air

England is well connected to the US, with frequent daily flights from 35 US airports. Key gateways include London Heathrow, London Gatwick and Manchester.

Regional gateways provide easy access to some of the destinations outside of London, and many provide connecting routes to the US.

By Rail

Traveling by rail is a scenic and relaxing way to enjoy England. Most main cities and towns have well serviced railway stations and all will connect to London. For some of the more rural destinations, a taxi or a driver guide would be necessary for F.I.T.'s. Train travel tends to be cheaper when booked in advance.

The BritRail pass provides ultimate flexibility and value for money for traveling in Britain. The passes must be purchased before visitors leave the US.

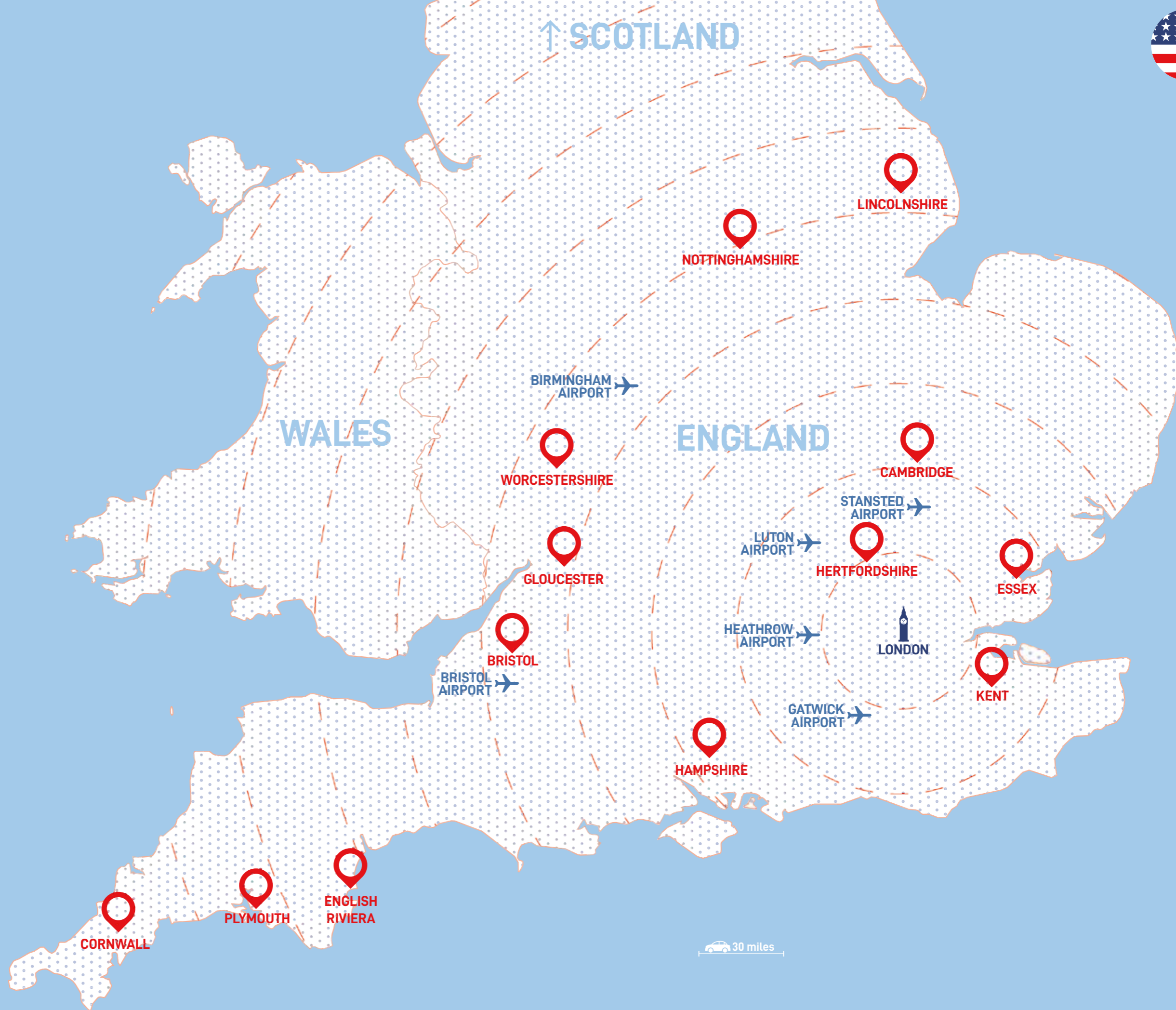
britrail.com

Great Western Railway operate the train network from London across the South West of England and Wales and the overnight sleeper service between London and Penzance. For routes and ticket information and sales:

gwr.com

By Car

For self drive visitors, cars in England are right hand drive and cars drive on the left hand side of the road. Hire cars tend to be manual (stick shift) so be sure to request an automatic on booking.



Supported by VisitBritain/VisitEngland through the Discover England Fund



VisitBritain



VisitEngland

visit
BRISTOL

Worcestershire
www.visitworcestershire.org

Lincolnshire
COUNTY COUNCIL
Working for a better future


VISIT NOTTINGHAMSHIRE

visit essex

Visit
Cornwall

 VISIT
HAMPSHIRE
CITY · COAST · COUNTRY

Cambridge
TAKE YOUR TIME

KENT
GARDEN of ENGLAND
kent.gov.uk


ENGLISH RIVIERA
BID COMPANY

Marketing
Gloucester




DESTINATION
PLYMOUTH


VISIT HERTS