

# Port of Hull

Explore the Pilgrim Roots region including  
Immingham, Scrooby, Boston & Gainsborough

1620—2020  
*Mayflower*  
400™

## Port Details

### PORT - Hull

The Port of Hull is the UK's leading timber port and handles over one million passengers a year. It is perfectly positioned to access the East Midland Region and many main cities are only a few hours drive away.

Address: Port House, Northern Gateway,  
Hull, HU9 5PQ

Key Contact: Simon Bird  
humber.commercial@abports.co.uk

Maximum berth length (LOA): 210 metres



Mayflower replica

## Local Guides

### Mayflower Pilgrim Tours

Sue Allan is a well-known historical novelist and Mayflower Pilgrim historian who delights in promoting the story of the Pilgrim Fathers and guiding modern day 'pilgrims' around the Mayflower Trail.  
+44 (0)1673 878398  
admin@mayflowermaid.com  
www.mayflowermaid.com

### Pilgrims & Prophets

Tours operated by a group of historians who will plan and guide a tour tailored to your specific interests, covering the Mayflower Pilgrim sights of Nottinghamshire and Lincolnshire.  
+44 (0)7470366689 +44 (0)7463680709  
mail@pilgrimsandprophets.co.uk

### Brackenbury's Britain

Brackenbury's Britain specialises in cultural and walking tours.  
+44 (0)330 660 0389  
richard@brackenburysbritain.co.uk  
www.brackenburysbritain.co.uk

## Coach Companies

### Hunts Coaches

Established in 1930 by Fred Hunt, Hunts Coaches have remained a family company to this day.  
+44 (0)1507 463000  
www.hunts-coaches.co.uk

### PC Coaches

For groups we have vast experience in the coach travel business.  
+44 (0)1522 533605  
www.pccoaches.co.uk

## An Introduction to the Pilgrim Roots region

Discover the roots of the Mayflower voyage in the villages and towns where the future leaders of the Plymouth Colony and signatories of the Mayflower Compact, William Brewster and William Bradford lived, worked and worshipped with Rev Richard Clifton. Learn how preachers John Smyth and Thomas Helwys, founders of the Baptist movement, met in secret with other non-conformists and eventually fled to Leiden.

The leading religious Separatists who voyaged to Holland and then on to America in 1620 were originally from 'Pilgrim Country' – the counties of Nottinghamshire, Lincolnshire and Yorkshire where a culture of independent thinking, passion and tolerance shaped their beliefs.

Within a two hour drive time of the Port of Hull, you can also reach Lincoln – home to 1215 Magna Carta and an impressive Castle and Cathedral: and Sherwood Forest, the legendary home of Robin Hood.



Gainsborough Old Hall

# Pilgrim Roots Region

Visit the towns, villages, manor houses and churches where the Mayflower Pilgrims lived and worshipped.



St Wilfred's Church

## Villages of North Nottinghamshire

Tour guide and coach transport is essential. Must be pre-booked.

### Scrooby - St Wilfred's Church

William Brewster had long been attracted by separatism and was fined for non-attendance at St Wilfred's Church where he was likely baptised and married.

### Scrooby - The Manor House

The former home of William Brewster where the Separatist congregation met in secret.

### Babworth Church

Closely connected with the origins of religious separatism, this is where Richard Clifton was parson from 1586 until 1605 and where items, including a silver chalice and Geneva bible with annotations from 1603 have been found.

### Austerfield - St Helena's Church

William Bradford, the second Governor of the Colony, was born in the village of Austerfield and baptised in St Helena's Church in the font which can still be seen today.

## Boston Town

(2 hours approx.)

Visit the stunning market town of Boston and the Guildhall where the Pilgrims were held and tried having first tried to escape England from nearby Scotia Creek. See the cells that held Bradford and Brewster. Visit Boston Stump; where Rev. John Cotton was preacher. The mass migration from Boston, England of 1630's influenced the founding of Boston USA.



Boston Guildhall

## Gainsborough Old Hall

(1 hour approx.)

One of the best preserved, timber-framed manor houses in the UK, dating to the 15th century and found in Gainsborough, north of Lincoln. Learn about the families that have lived in and managed the old hall through the centuries and to find out how the house has been involved in British history - including the fascinating story of the Mayflower Pilgrims.



Gainsborough Old Hall

## Things to do

### St Botolph's Parish Church

St. Botolph's is a living church set in the heart of the City of London.



+44 (0)1205 310929  
www.parish-of-boston.org.uk  
tours@parishofboston.co.uk

### Boston Guildhall

Where the Pilgrims were held and tried having first attempted to escape England from nearby Scotia Creek.



+44 (0)1205 365954  
ticboston@boston.gov.uk  
www.bostonguildhall.co.uk

### Gainsborough Old Hall

One of the best preserved, timber-framed manor houses in the UK.



+44 (0)1522 782040  
gainsborougholdhall@lincolnshire.gov.uk  
www.gainsborougholdhall.com

### Lincoln Castle, Lincoln

Built almost 1000 years ago by William the Conqueror, it has been voted the UK's most popular castle and has witnessed some of the most dramatic events in English history.



+44 (0)1522 554559  
www.lincolncastle.com  
groups-lincolncastle@lincolnshire.gov.uk

### Immingham Museum

Tells the story of the Pilgrims journey to Holland.



+44 (0)1469 727272  
admin@imminghammuseum.org  
www.imminghammuseum.org

### The Harley Gallery

Situated on the ducal Welbeck estate, the award-winning Harley Gallery shows contemporary exhibitions by leading visual artist.



+44 (0)1909 501 700  
info@harleygallery.co.uk  
www.harleygallery.co.uk

### Creswell Crag, Nottinghamshire

Creswell Crag is a limestone gorge honeycombed with caves and smaller fissures.



+44 (0)1909 720378  
www.creswell-crag.org.uk

## Things to do

### Sherwood Forest Country Park & Visitor Centre

Legendary home of Robin Hood and an awe inspiring nature reserve of ancient oak trees.



+44 (0)1623 823202  
www.visit-nottinghamshire.co.uk/things-to-do/sherwood-forest-country-park-and-visitor-centre-p355601

### Mayflower Pilgrims Visitor Centre

The Mayflower Visitor Centre is a museum that also has tourist information, an art gallery, working artisan studios, local craft shop and farm shop and café.



+44 (0)1777 860414  
enquiries@dunhamhouse.co.uk

## Lunch and Evening Meals

### Fox and Hounds

An up to date version of the traditional English country pub.



+44 (0)1623 792 383  
www.foxblidworth.co.uk

### Uncle Henry's Farm Shop

A farm to fork experience on a family farm with a passion for local, great tasting produce



+44 (0)1652 640308  
www.unclehenrys.co.uk

### Forest Pines Dining

Food and drink is something that is taken very, very seriously at Forest Pines Hotel.



+44 (0)1652 650770  
www.qhotels.co.uk

### Washingborough Hall Hotel

Beautiful sash windows and pretty views across the lawns.



+44 (0)1522 790 340  
www.washingboroughhall.com

### Petwood Hotel's Squadron Bar

Bursting with character and history.



+44 (0)1526 352411  
www.petwood.co.uk

### Doddington Hall Cafe & Restaurant

Stately home with farm shop, restaurant and private dining.



+44 (0)1522 812517  
www.doddingtonhall.com

### Restaurant Bar 1650 at Ye Olde Bell, Nottinghamshire

Fresh and seasonal dishes prepared by a creative team of chefs, with tempting menus available throughout the day.



+44 (0)1777 705121  
www.yeoldebells-hotel.co.uk

Visit the town of Immingham where the The Scrooby Separatists fled from to Holland, the fishing port of Grimsby and the famous seaside town of Cleethorpes.



Immingham Museum

### Immingham Museum

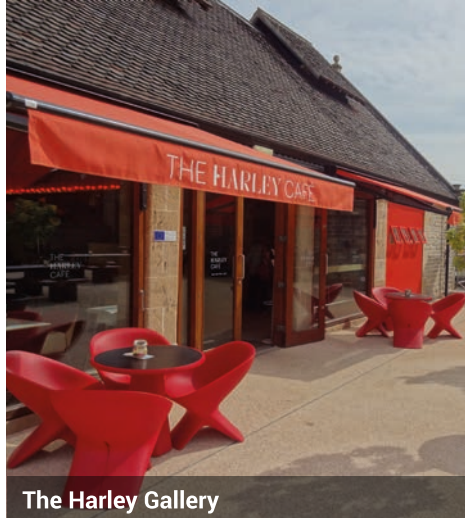
When the Mayflower set sail for America in 1620, the core of its Pilgrims came from that quiet corner of England where Lincolnshire, Nottinghamshire and Yorkshire meet beside the River Trent. This gentle countryside gave birth to families whose simple determination and rock-life faith in the Separatist Church led them, via Holland, to the Mayflower and Plymouth Plantation in New England, in search of religious freedom from England's new king, James 1st. The Display in the Museum tells the story of the Pilgrims journey to Holland.



Immingham Museum

### The Harley Gallery

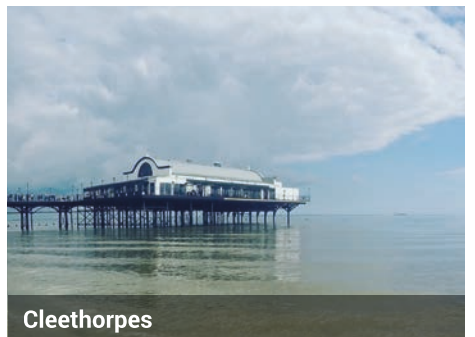
Situated on the ducal Welbeck estate, the award-winning Harley Gallery shows contemporary exhibitions by leading visual artist.



The Harley Gallery

### Cleethorpes

A beautiful seaside resort situated on the estuary of the Humber in North East Lincolnshire, the name Cleethorpes is thought to come from joining the words clee, an old word for clay, and thorpes, an Old English/Old Norse word for villages. Before becoming a unified town, Cleethorpes was made up of three small villages, or "thorpes": Itterby, Oole and Thrunscoe, which were part of a wider parish called Clee (centred on Old Clee).



Cleethorpes

### Launay's Restaurant, Nottinghamshire

A seasonal menu fusing traditional English and French cuisine with modern dishes from Europe and beyond.



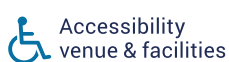
+44 (0)1623 822266  
www.launaysrestaurant.co.uk

### Forest Lodge Pub, Nottinghamshire

Enjoy local produce, cooked to perfection by a talented kitchen team. Whether you're looking for a light bite to eat for lunch, or an indulgent meal for dinner, this restaurant fits the bill.



+44 (0)1623 824 443  
www.forestlodgehotel.co.uk



## Food and Drink Experiences

### Axholme Brewery Tours

Brewery located by Clearwater Lake in Crowle.



+44 (0)1724 781804

[www.axholmebrewing.co.uk](http://www.axholmebrewing.co.uk)

### Launay's Restaurant, Notts

A seasonal menu fusing traditional English and French cuisine.



+44 (0)1623 822266

[www.launaysrestaurant.co.uk](http://www.launaysrestaurant.co.uk)

### Healing Manor

Beautiful manor house for lunch and afternoon teas.



+44 (0)1472 884544

[www.healingmanorhotel.co.uk](http://www.healingmanorhotel.co.uk)

### Stokes Coffee Barista Experience

Training and Coffee Courses for budding baristas and coffee enthusiasts.



+44 (0)1522 523 548

[www.stokes-coffee.co.uk](http://www.stokes-coffee.co.uk)

## Mayflower Speakers

Please contacts directly to confirm topics, availability and rates.

James Evans: Popular historian Author of 'Emigrants' and of 'Merchant Adventurers'.

+44 (0)7971 737139

[james@jamesevans.org.uk](mailto:james@jamesevans.org.uk)

[www.jamesevans.org.uk](http://www.jamesevans.org.uk)

Sue Allan: Historian and novelist

+44 (0)1673 878398

[admin@mayflowermaid.com](mailto:admin@mayflowermaid.com)

1620—2020  
*Mayflower*  
400™

Steering our future,  
inspired by the past.



Robin Hood, Sherwood Forrest



## Map Key

- Location of attractions
- Food & drink establishments
- Approx distance from port (miles)

## For more information

For more information in the Pilgrim Roots region please visit either [VisitLincoln.com](http://VisitLincoln.com) or [Visit-Nottinghamshire.co.uk](http://Visit-Nottinghamshire.co.uk) ([marketing@visit-nottinghamshire.co.uk](mailto:marketing@visit-nottinghamshire.co.uk))

For specific enquiries and further information, contact Charlotte Goy, [Charlotte@VisitLincoln.com](mailto:Charlotte@VisitLincoln.com) +44 (0)1522 842705  
[www.visitlincoln.com](http://www.visitlincoln.com)

Content correct at time of going to press. Check before you travel. E&OE.